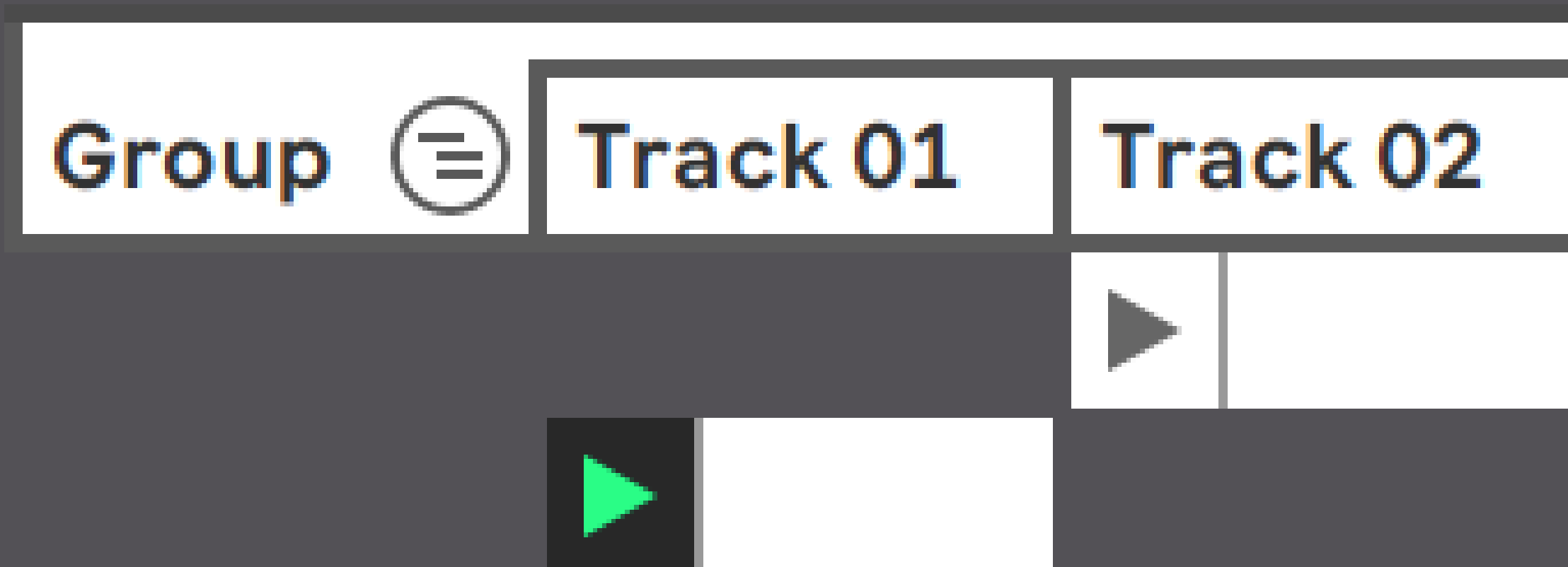


Track Select 3



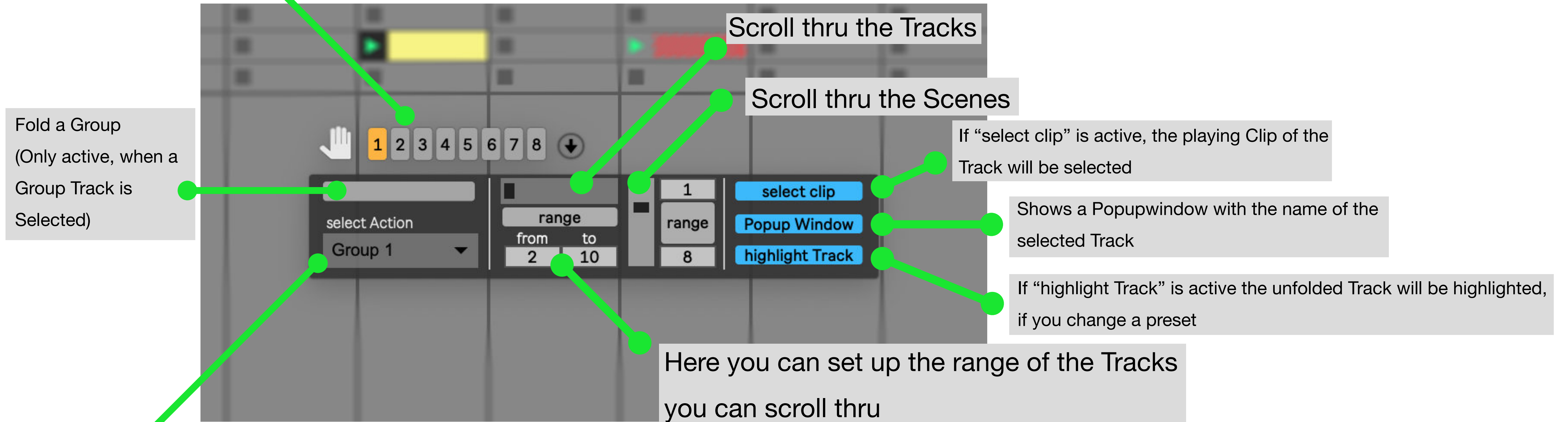
Track Select 3 - M4L Device:

- 1 Introduction
- 2 - 3 Overview
- 4 Connect with MIRA
- 5 MIRA

Track Select 3 is a little helper to get fast thru bigger Ableton Live Projects, where you can highlight Groups, Fade thru Selected Tracks or selected Scenes - with an Hardwarecontroller or with Mira on an mobile Touch Device, like an Microsoft Surface, Android Tablet or iPad.

- The Popup window is the main window of the Device. You can move it by clicking on the Hand.

Presets: here you have 8 Presets where you can set up which Toplevel Group will be unfold and in which Range you can select the Tracks & Scenes

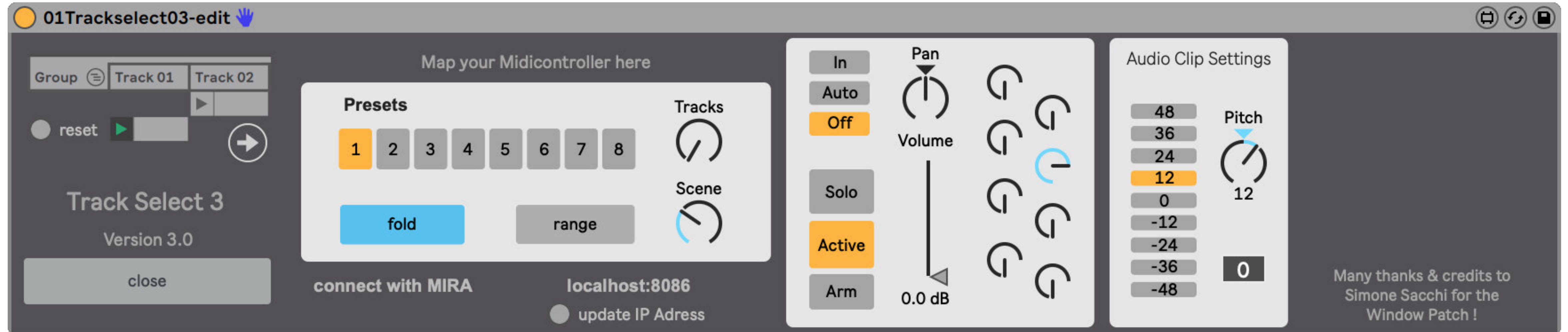


Choose the Top-Level Group that should be unfolded.

- In the Device you can Map the Parameters to a controller:

You can Map:

- 1) The Parameters for selecting your Tracks & Scenes
- 2) A channel Strip: for Volume, Pan, monitoring, Solo, Mute, Arm & Sends for the selected
- 3) and Parameters to Control the Pitch & finetuning of the selected Audio Clip

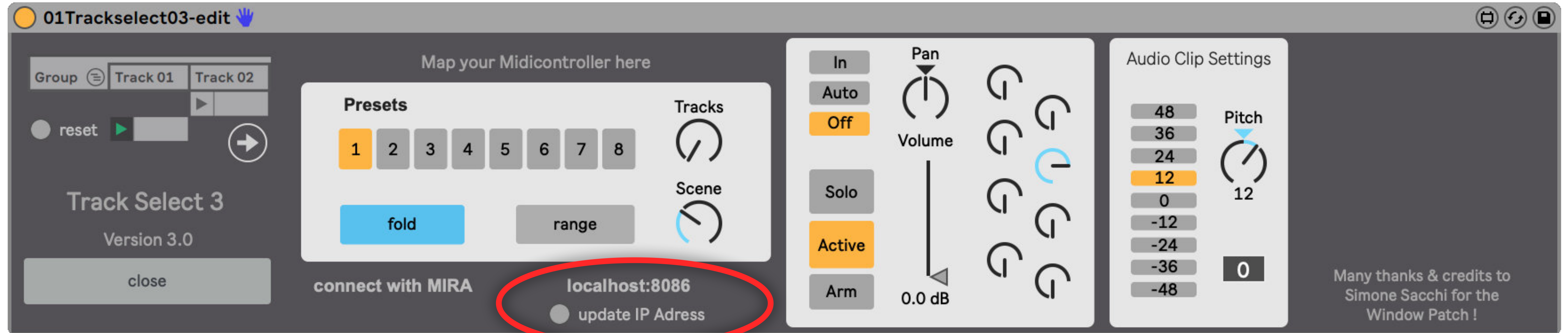


You can connect your Device via Wifi with any mobile Touch Device, like Microsoft Surface, Android or iOS Devices.

A Tablet Device is preferred.

Be sure your Computer and your mobile Device is connected to the same Wifi Network.

Then Type the IP Address into the Browser and MIRA will load. Now you should be able to control Track Select from Your mobile Device.



When you have connected the Device via MIRA you have this Surface to control the most important Parameters of the Track

Shows the Name of the selected Track

Channel Strip Settings

Presets

Scroll thru the Scenes

Audio Clip Settings

Scroll thru the Tracks

